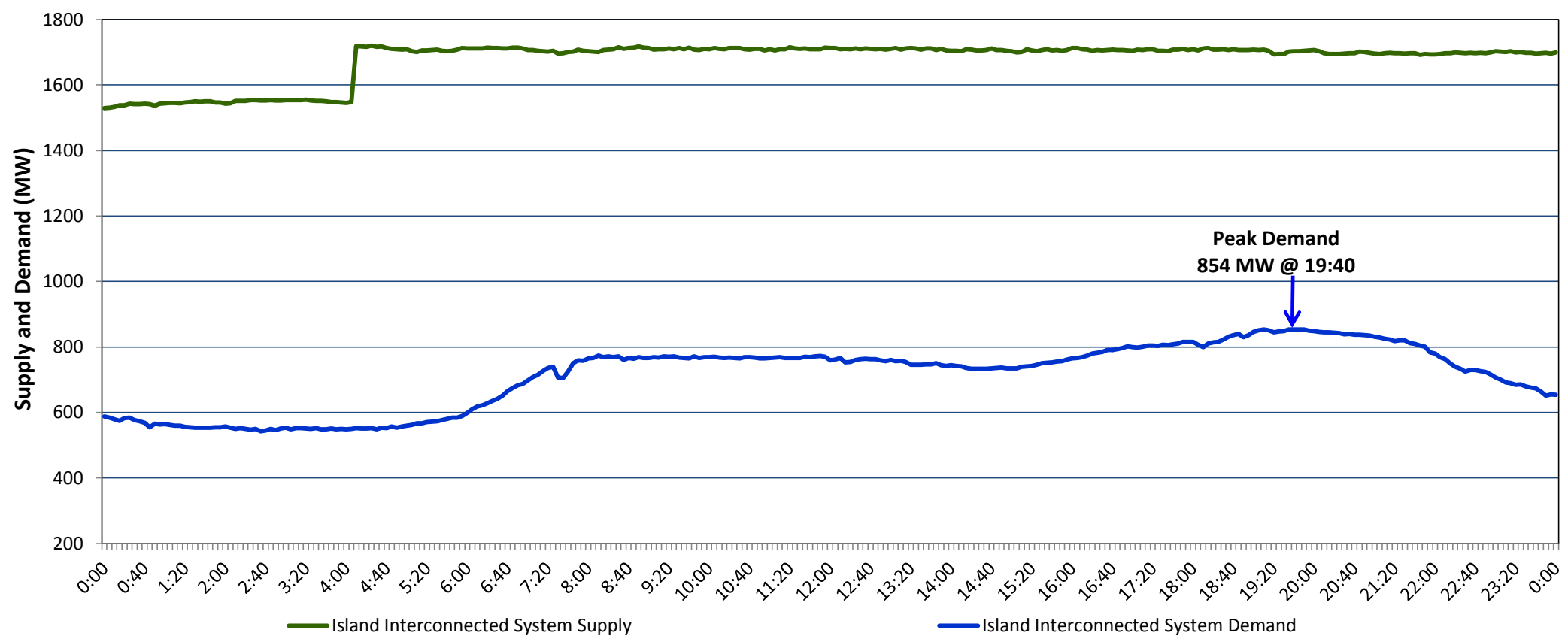


**Newfoundland Labrador Hydro (NLH)
Supply and Demand Status Report Filed Thursday, October 12, 2017**

**Section 1
Island Interconnected System Supply and Demand
Actual 24 Hour System Performance For Wednesday, October 11, 2017**



Supply Notes For October 11, 2017

1,2

- A As of 0827 hours, July 31, 2017, Holyrood Unit 2 unavailable due to planned outage 165 MW (170 MW).
- B As of 1527 hours, September 17, 2017, Cat Arm Unit 1 unavailable due to planned outage (67 MW).
- C As of 1229 hours, September 22, 2017, Stephenville Gas Turbine available at 25 MW (50 MW).
- D As of 1211 hours, October 01, 2017, Cat Arm Unit 2 unavailable due to planned outage (67 MW).
- E At 0404 hours, October 11, 2017, Holyrood Unit 1 available (170 MW).
- F At 1919 hours, October 11, 2017, Paradise River Unit unavailable (8 MW).
- G At 1934 hours, October 11, 2017, Paradise River Unit available (8 MW).

**Section 2
Island Interconnected Supply and Demand**

Thu, Oct 12, 2017	Island System Outlook ³	Seven-Day Forecast	Temperature (°C)		Island System Daily Peak Demand (MW) Forecast
			Morning	Evening	
Available Island System Supply: ⁵	1,665 MW	Thursday, October 12, 2017	6	5	955
NLH Generation: ⁴	1,365 MW	Friday, October 13, 2017	5	4	1,015
NLH Power Purchases: ⁶	110 MW	Saturday, October 14, 2017	5	10	970
Other Island Generation:	190 MW	Sunday, October 15, 2017	7	7	970
Current St. John's Temperature:	5 °C	Monday, October 16, 2017	4	6	1,065
Current St. John's Windchill:	N/A °C	Tuesday, October 17, 2017	6	5	1,095
7-Day Island Peak Demand Forecast:	1,095 MW	Wednesday, October 18, 2017	5	8	1,020

Supply Notes For October 12, 2017

3

- Notes:
1. Generation outages for running and corrective maintenance are included. These are not unusual for power system operations. They generally do not impact customer supply. The power system operators schedule outages to system equipment whenever possible to coincide with periods when customer demands are low and sufficient supply reserves are available. However, from time to time equipment outages are necessary and reserves may be impacted.
 2. Due to the Island Interconnected System being isolated from the larger North American grid, when there is a sudden loss of large generating units some customer's load must be interrupted for short periods to bring generation output equal to customer demand. This automatic action of power system protection, referred to as under frequency load shedding, is necessary to ensure the integrity and reliability of system equipment. Under frequency events typically occur 5 to 8 times per year on the Island Interconnected System and the resultant customer load interruptions are generally less than 30 minutes.
 3. As of 0800 Hours.
 4. Gross output including station service at Holyrood (24.5 MW) and improved NLH hydraulic output due to water levels (35 MW).
 5. Gross output from all Island sources (including Note 4).
 6. NLH Power Purchases include: CBPP Co-Gen, Nalcor Exploits, Rattle Brook, Star Lake, Vale capacity assistance (when applicable), and Wind Generation.

**Section 3
Island Peak Demand Information
Previous Day Actual Peak and Current Day Forecast Peak**

Wed, Oct 11, 2017	Actual Island Peak Demand ⁸	19:40	854 MW
Thu, Oct 12, 2017	Forecast Island Peak Demand		955 MW

Notes: 8. Island Demand is supplied by NLH generation and purchases, plus generation owned and operated by Newfoundland Power and Corner Brook Pulp & Paper (Deer Lake Power, DLP).